

SINVAC ROTO



SINVAC ROTO

PET & AGRICULTURE

www.sinvac.co.za

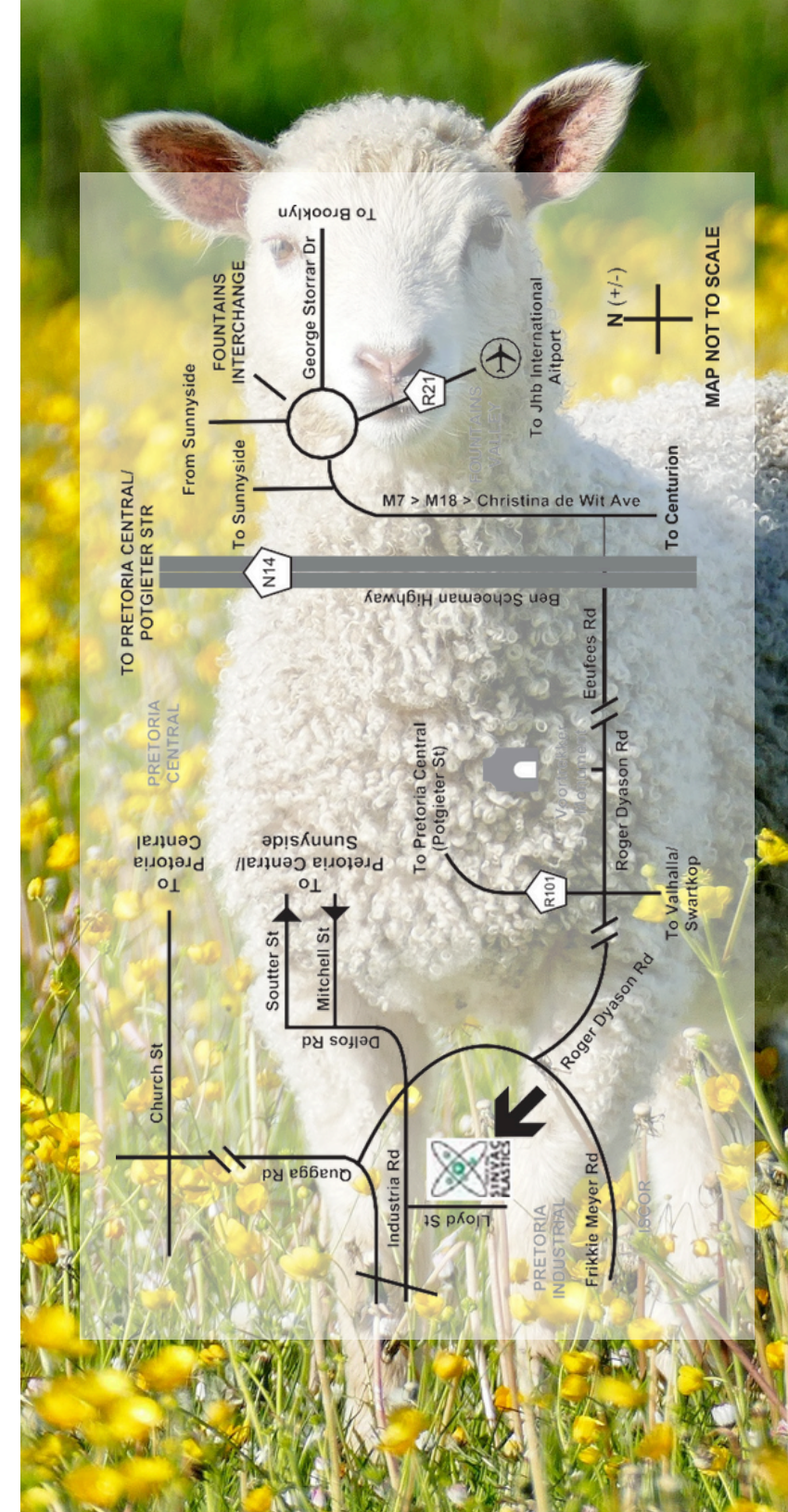
ABOUT US:

SINVAC ROTO is the oldest roto-moulder in South Africa and was established in 1962 in Pretoria West on the existing site by Mr. Lightbody and Greek partners. The name "Sinvac" was derived from the objective to produce the roto-moulded products and 'SIN' was derived from the sintering process which is part of roto-moulding. Manufacturing equipment was largely imported from the Netherlands and some were added over the years. In 1983 it became BONAR SINVAC PLASTIC and part of the international Bonar Industries group. Bonar later disinvested and in 1993 Dr. Hans Luthy bought the business and managed it up to 2003 when it was sold to the existing owners. Dr. Luthy remained with the business up to February 2005.

The history and good name of Sinvac Roto continue into the entity SINVAC ROTO (Pty) Ltd owned by a group of engineers, employees and BEE shareholders. The main focus of this entity is the marketing, manufacturing and distribution of roto-moulded and other plastic products in South Africa and other countries. The majority of the manufacturing is done in the manufacturing entity which had to be redesigned, reconfigured and new technology was also introduced and quality systems upgraded. SINVAC ROTO operates as part of a group specialized in raw material manufacturing, plastic extrusion, plastic and steel fabrication, mining projects and other industrial activities.

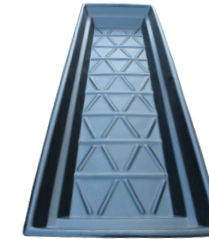
SINVAC's vision is to provide quality products and solutions to its customers. World-class manufacturing standards and innovative production techniques allow SINVAC to provide products to customer requirements. SINVAC caters to a boutique that produces for the requirements of small orders but also has the capacity to deliver big-volume contracts. Lead time in the boutique section of Express Lane. SINVAC hosts and/or owns a total of about 450 moulds. Many of these are custom moulds for specific customers and are not shown in the brochure or at the Factory Shop. The popular items are kept in stock for even shorter lead times than above and on special arrangements with customers, the stock is kept for them. Deliveries in the Johannesburg and Pretoria area are made on a regular basis for customers convenience.

SINVAC operates from the factory premises in Pretoria West and has a Sales & Marketing team, Factory Shop and a full production unit based there. Visit the factory shop as you can interact with the Sales & Marketing team as well as the technical and manufacturing team. You can also view the existing product range and our experienced staff can help you to create your own custom product.





LIST OF CONTENT

1. Sheep / Nyala feeder
2. Buffalo gravity feeder
3. Sable gravity feeder
4. Chicken feeder
5. Gate feeder
6. Water trough dt50
7. DBL7 Water trough
8. DBL4 Water trough
9. DT 10 Water trough
10. DT 30 Water trough
11. Water trough dt180
12. Water trough dt500
13. Water trough dt 2000
14. Cattle foot bath
15. Sheep foot bath
16. Sheep belly bath
17. Calf/ Sheep/ Goat - 5 teat
18. Wheelbarrow
19. K9 vendor 8kg
20. K9 vendor
21. Igloo kennel
22. Tuscan kennel
23. Dog on tap
24. Fly cosy kennel
25. Other items



CONTACT US:

 +27 (0) 12 386 6486

 +27 (0) 71 362 3489

 INFO@SINVAC.CO.ZA

 WWW.SINVAC.CO.ZA



1. SHEEP / NYALA FEEDER

- Height: 1090 mm
- Top Diameter: 1160 mm
- Bowl Diameter: 940 mm
- Capacity: Up to 150 kg
- Gravity feeder System
- UV Resistant.
- Savings in labor, time and fuel.
- Feed protected from contamination.
- Feed protected from Adverse Weather whilst in silo.
- 5 Years Guarantee



Add on: • Creep feeding grid & Anti Waste Ring



Creep Feeding for lambs:
Supplying extra nutrition to nursing lambs It is especially beneficial for lambs managed in intensive production systems. The lamb Option prevents access to feed to mature animals.

3. SABLE GRAVITY FEEDER

- Height: 1550 mm
- Top Diameter: 1160 mm
- Bowl Diameter: 940 mm
- Capacity: Up to 300 kg
- Gravity feeder System
- UV Resistant
- Refill once weekly
- Easy to transport
- 5 Years Guarantee



Our solar Powered feeder Innovative Design keeps on Saving time, money and labor You can control the feeding times up to 6 times a day and Control the amount of feed dispensed at a time.

2. BUFFALO GRAVITY FEEDER

- Height: 1900 mm
- Top Diameter: 1160 mm
- Bowl Diameter: 940 mm
- Capacity: Up to 1000kg
- Gravity feeder System
- UV Resistant
- Savings in labor, time and fuel
- Feed protected from contamination
- Feed Protected from Adverse Weather whilst in silo
- 5 Years Guarantee



Buffalo Auto Feeder:
Our solar Powered feeder Innovative Design keeps on Saving time, money and labor You can control the feeding times up to 6 times a day and Control the amount of feed dispensed at a time.

Take note that the feeder can be automated using solar.

4. CHICKEN FEEDER

- Adjustable Height: 740 mm - 850 mm
- Bowl height: 80 mm - 220 mm
- Bowl Diameter: 740 mm
- Capacity: Up to 100 kg
- UV Resistant.
- Savings in labor, time and fuel.
- Feed protected from contamination Adjustable height for chicks 3 days to mature.



Easily adjustable height for chicks from 3 days to mature. Tightly sealed lid to protect feed. Bowl designed to prevent wastage and carry up to 100kg of feed.

5. GATE FEEDER

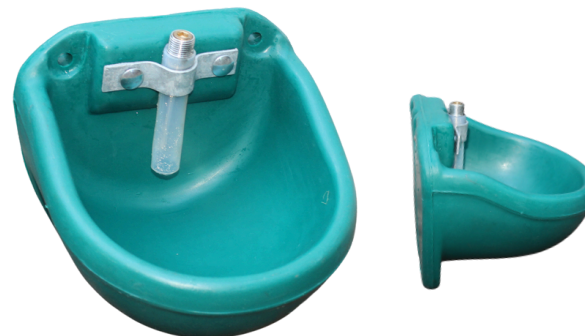
- Length: 1520 mm
- Front Height: 700 mm
- Back Height: 390 mm
- Width: 210 mm
- UV Resistant
- 5 Years Guarantee
- Durable and Easy to clean
- Fittings with hooks for mounting



Gate Feeder is manufactured from tough, impact resistant. It is the perfect solution for feeding animals or groups of livestock both indoors and outdoors. It hangs easily on a gate or fence and is easy to clean and disinfect. The design also makes it easy to stack and transport. Ideal for use with our calf hutch frames

7. DBL7 WATER TROUGH

- Height: 225mm
- Length: 270mm
- Width: 250mm
- UV Resistant
- 5 Years Guarantee
- Fitted with ball Valve
- For horses ect.

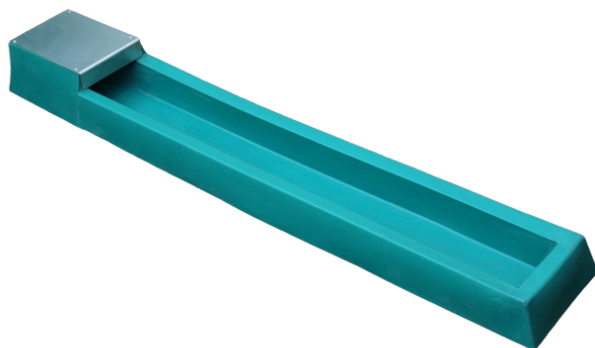


As the horse places its muzzle in the bowl, it pushes the valve down, activating the water flow, this model can also be used for pigs. Its dimensions are:
270mm(L) x 250mm(W) x 225mm(H)

*TOP SELLER

8. DBL4 WATER TROUGH

- Height: 85 mm
- Length: 1560 mm
- Width: 260 mm
- Valve cover Height: 140 mm
- UV Resistant
- 5 Years Guarantee
- Fitted with Ball Valve
- For small animals ostrich, chicken etc.
- Height: 330mm
- Length: 25mm
- Width: 22cm
- Wall mounted.
- UV Resistant
- 5 Years Guarantee
- Fitted with Ball Valve
- Capacity: 4 liters



Our unique Innovative Design of DT5 are tough, impact resistant and designed to withstand heavy use. Each trough is stable in UV light and has 5 year guarantee. Suitable for all livestock, indoor or outdoor. For small animals like ostrich chicks, chickens etc.



Suitable for horses, cow's, pigs and goats. Wall mounted Double walled Drinking Bowl. Directly mounted to the wall, no brackets required. Float Valve and drain

Stainless steel cover protecting the valve Capacity of 4l. Extremely strong and durable Dimensions: 33cm x 25cm x 22cm

9. DT 10 WATER TROUGH

- Height: 250 mm
- Length: 680 mm
- Width: 450 mm
- Capacity: 54 liters
- UV Resistant
- 5 Years Guarantee
- Effective treatment to prevent claw/hoof diseases.



Our Dt 10 (53L) single reservoir trough is particularly suited for young calves. They are extremely strong and durable and can be positioned in pasture or the shed/stable.



10. DT 30 WATER TROUGH

- Height: 280 mm
- Length: 1190 mm
- Width: 480 mm
- Capacity: 136 liters
- UV Resistant
- 5 Years Guarantee
- Fitted with 25mm ball Valve
- Double Water trough



Our Dt 30(136L) double reservoir trough is particularly suited for young calves. And can be positioned in pasture or the shed/stable. Double reservoir allows the trough to be positioned between two zoned areas thereby maximizing use.

11. WATER TROUGH DT180

- Height: 670 mm
- Length: 1420 mm
- Width: 8170 mm
- Circular Water Trough
- UV Resistant
- 5 Years Guarantee
- Fitted with 25mm ball Valve



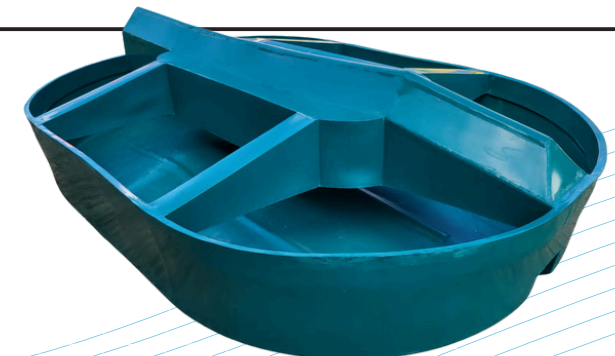
Our unique Innovave Design of theDt 180 are tough, impact resistant and designed to withstand heavy use. Each trough is stable in UV light and has 5 year Guarantee. Suitable for all livestock indoor or Outdoor.

12. WATER TROUGH DT 500

- Height: 400 mm
- Length: 3000 cm
- Width: 550 mm
- Capacity: 500 liters
- UV Resistant
- 5 Years Guarantee
- Fitted ball Valve

13. WATER TROUGH DT 2000

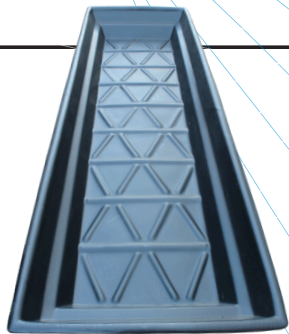
- Height: 450 mm
- Length: 3000 mm
- Width: 2200 mm
- Capacity: 2000 liters
- UV Resistant
- 5 Years Guarantee
- Fitted ball Valve



*CAN ALSO BE USED AS A FEED TROUGH

14. CATTLE FOOT BATH

- Height: 250 mm
- Length: 3100 mm
- Width: 920 mm
- UV Resistant
- 5 Years Guarantee
- Effective treatment to prevent claw/h hoof diseases.



The base design is effective in the treatment of claw/h hoof diseases including interdigital dermatitis. Our plastic is also durable and tough to withstand the weight of the animals.

*DUAL USE / CAN BE USED AS A FEEDING TROUGH

15. SHEEP FOOT BATH

- Height: 400 mm
- Length: 3030 mm
- Width: 530mm
- UV Resistant
- 5 Years Guarantee
- Effective treatment to prevent claw/h hoof diseases.



The base design is effective in the treatment of claw/h hoof diseases including interdigital dermatitis. Our plastic also durable and tough to withstand the weight of the animals.

*DUAL USE / CAN BE USED AS A FEEDING TROUGH

16. SHEEP BELLY BATH

- Height: 310mm
- Length: 3100m
- Width: 600mm
- UV Resistant
- 5 Years Guarantee
- Effective treatment for Tics



The base design is a Tick treatment bath treatment. Our plastic is also durable and tough to withstand the weight of the animals.

17. CALF, SHEEP AND GOAT DRINKER - 5 TEAT

- Easy to clean
- Capacity: 2liter x 5
- 5 individual compartments
- UV Resistant
- 5 Years Guarantee
- Easy to mount on gate , rail or fence.



Our 5 teat Compartment Feeder offers an efficient way of supplying milk to several calves at once. This feeder is fitted with our starter teat which is ideal for new born calves, encouraging a natural sucking action allowing milk to be delivered to the calf at an optimum rate.



18. WHEELBARROW

- Capacity: 255 liters | 200kg
- Dimensions: 1830mm x 860mm x 860mm
- 2 wheel tipping barrow
- UV Resistant
- 5 Years Guarantee
- Durable and Easy to clean



Wheel barrow is perfect for use both on the farm, the yard and for general duties.



19. K9 VENDOR 8KG

- Helps keep your Pets Nourished even If you are not at home
- Capacity:8 Kg
- UV Resistant
- 5 Years Guarantee
- Durable and Easy to clean.



20. K9 VENDOR 25KG

- Helps keep your Pets Nourished even If you are not at home
- Capacity: 25 Kg
- UV Resistant
- 5 Years Guarantee
- Durable and Easy to clean.



The K9 pet food vendor is a scientifically designed self feeder that makes use of a gravity feed system.

21. IGLOO KENNEL

- Available in 5 sizes. Extra small, Small, Medium, Large and Extra large.
- UV Resistant
- 5 Years Guarantee
- Available In 2 colours
- -Green -Terracotta



Size	Length	Width
Small	500mm	470mm
Medium	650mm	620mm
Midi	720mm	760mm
Large	940mm	860mm
Extra Large	1150mm	1050mm

22. TUSCAN KENNEL



- Available in 4 different sizes:
- Small Medium
- Large X Large
- UV Resistant
- 5 Years Guarantee



Size	Length	Width	Height
Small	600mm	400mm	440mm
Medium	900mm	600mm	660mm
Large	1200mm	800mm	1100mm
Extra large	1600mm	1080mm	1200mm

23. DOG ON TAP

- Helps keep your Pets Nourished even if you are not at home.
- Automatic Ball Valve System.
- UV Resistant
- 5 Years Guarantee
- Durable and Easy to clean.



24. FLY COSY KENNEL

- Available in 2 sizes: Large and Extra large.
- UV Resistant
- 5 Years Guarantee
- IATA Approved.



25. OTHER ITEMS:

1. Eva balls
2. Bird feeder
3. Fire Extinguisher case
4. K9 Shuteye Dog Bed
5. Export Kennel
6. Calf Kennel
7. Hay Feeder
8. Tick Control Feeder
9. Buffalo Auto Feeder

